

JK-T373

零件样本

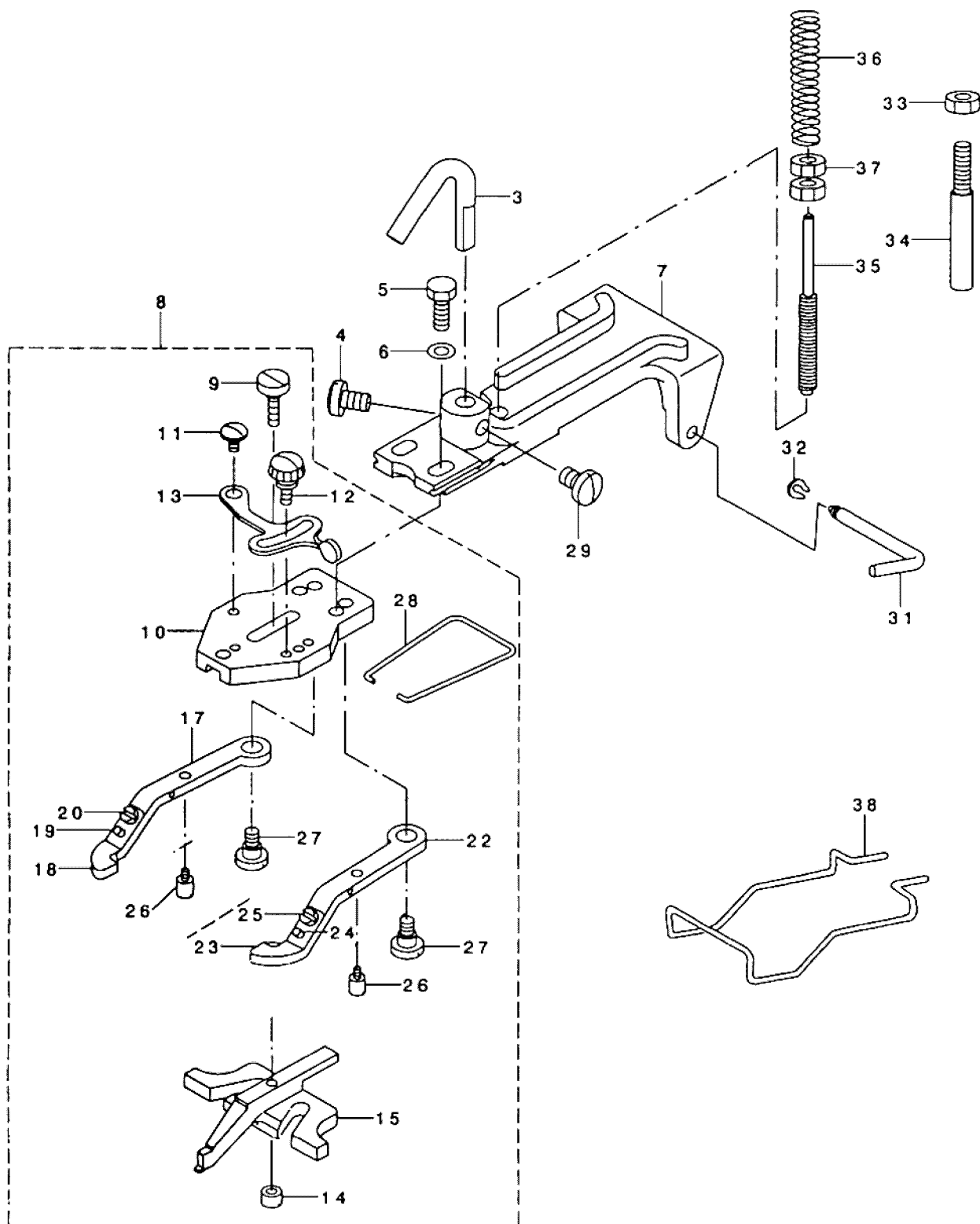
PARTS BOOK

**New JACK Sewing
Machine**

2013 年 4 月版

Revised edition in April, 2013

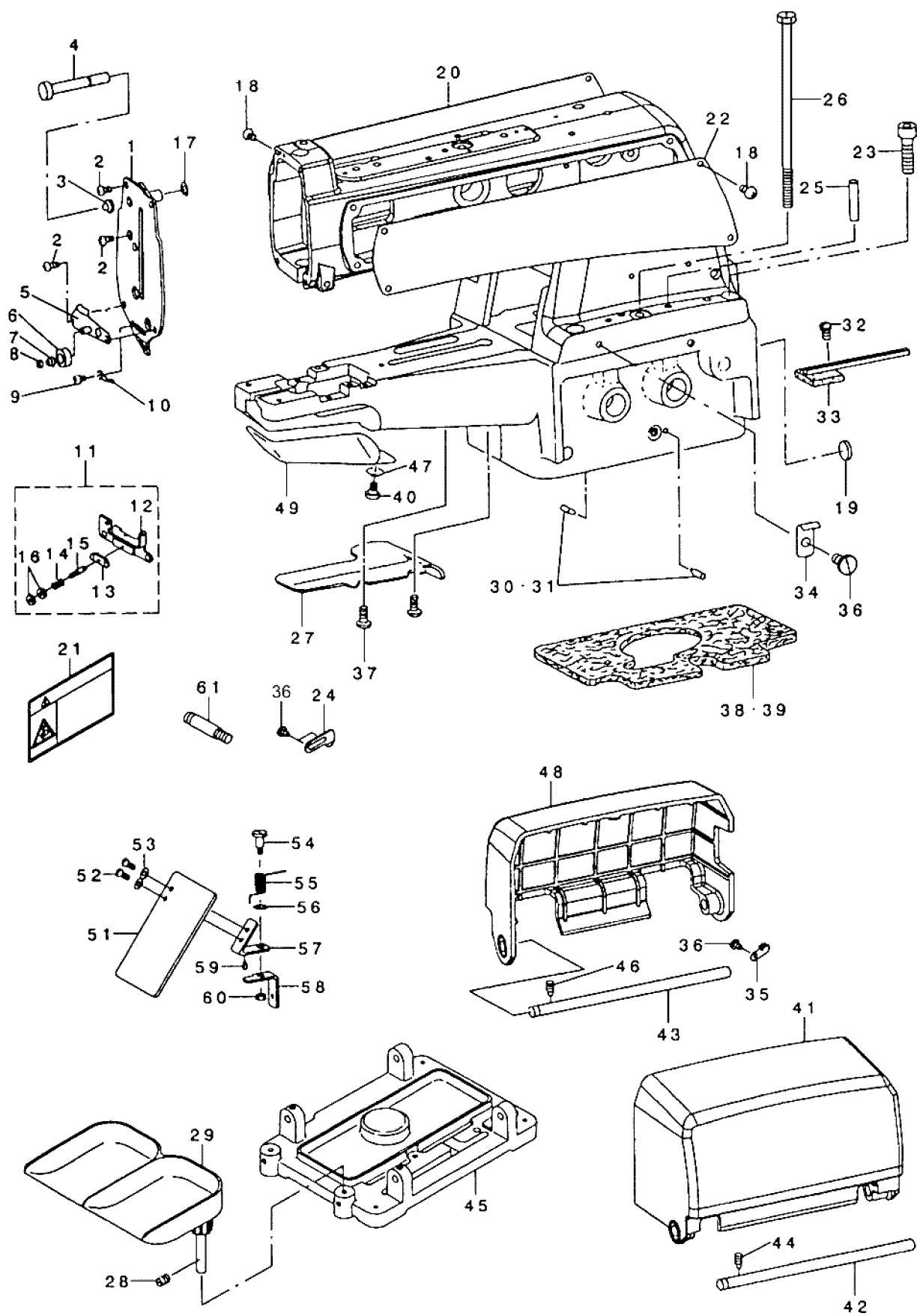
一、钮钳机构部件/Button clamp mechanism components



第一部件 钮夹部件

| 序号 | 零件件号 | 名称 | 数量 | 同类编号 | Description |
|----|------------|----------------|----|-----------------|----------------------------------|
| 1 | ×××× | 钮扣钳组件 | 1 | B2547-372-0BA | Flat button clamp asm. |
| 3 | 40902001 | 钮针提升杆 | 1 | B2546-372-000 | Button clamp lifing rod |
| 4 | 412S14002 | 固定提升杆的螺钉 | 1 | SS-7150940-SP | Screw 15/64-28 L=9 |
| 5 | 409S12001 | 用于钮钳座的螺钉 | 2 | SS-9621413-SP | Screw 3/16-32 L=13.5 |
| 6 | 40928001 | 垫圈 | 2 | WP-0501016-SD | Washer 5×10.5×1 |
| 7 | 300145 | 钮钳座 | 1 | B2542-372-00A | Button clamp holder |
| 8 | 4091200100 | 钮钳杆座组件 | 1 | B2547-372-0C0 | Jaw lever holder asm. |
| 9 | 409S20001 | 用于钮钳座的的合叶螺钉 | 1 | SD-0550301-SP | Hinge screw D=5.5 H=1.8 |
| 10 | 40912002 | 钮钳杆钳座 | 1 | B2547-372-000 | Jaw lever holder |
| 11 | 409S20002 | 用于钮钳座的合叶螺钉 (B) | 1 | SD-0550181-SP | Hinge screw D=5.5 H=1.8 |
| 12 | 409S20003 | 用于止动杆的夹紧螺钉 | 1 | B2549-372-000 | Clamp screw A |
| 13 | 40912003 | 钮钳止动杆 | 1 | B2548-372-000 | Snap fastener clamp stop lever |
| 14 | 409S16001 | 合叶螺母 | 1 | B2553-372-000 | Nut |
| 15 | 40901003 | 钮钳片 | 1 | B2552-372-000 | Button clamp slide |
| 16 | 4091200400 | 钮钳杆钳左组件 | 1 | B2555-372-0A0 | Button clamp lever jaw, left A |
| 17 | 40912005 | 钮钳杆钳 (左) | 1 | B2555-372-000 | Button clamp lever jaw(left) |
| 18 | 40912006 | 钮钳支撑弹簧 (左) | 1 | B2556-372-000 | Button holding spring left |
| 19 | P03007 | 销2.5×6 | 1 | ---- | Button clamp locating pin |
| 20 | 409S11002 | 用于钮钳座弹簧的螺钉 | 1 | SS-7090410-SP | Screw 9/64-40 L=3.5 |
| 21 | 4091200700 | 钮钳杆钳右组件 | 1 | B2557-372-0A0 | Button clamp lever jaw, right |
| 22 | 40912008 | 钮钳杆钳 (右) | 1 | B2557-372-000 | Button clamp lever jaw(right) |
| 23 | 40912009 | 钮钳支撑弹簧 (右) | 1 | B2558-372-000 | Button holding spring right |
| 24 | P03007 | 销2.5×6 | 1 | ---- | Button clamp locating pin |
| 25 | 409S11002 | 用于钮钳座弹簧的螺钉 | 1 | SS-7090410-SP | Screw 9/64-40 L=3.5 |
| 26 | 409S20004 | 钮钳止动销 | 2 | B2560-372-000 | Button clamp stop pin |
| 27 | 409S20005 | 用于杆钳的合叶螺钉 | 2 | SD-0640391-TP | Hinge screw D=6.35 H=3.9 |
| 28 | 40927001 | 钮钳弹簧 | 1 | B2561-372-000 | Button clamp spring |
| 29 | 412S14002 | 固定提升杆的螺钉 | 1 | SS-7150940-SP | Screw 15/64-28 L=9 |
| 31 | 40902002 | 合叶销 | 1 | B2540-372-000 | Hinge pin |
| 32 | H05007 | 开口挡圈3 | 1 | GB/T896-1986 | Snap ring |
| 33 | 402S16003 | 用于钮钳塞销的螺母 | 2 | NS-6150430-SP | Nut 15/64-28 |
| 34 | 409S30001 | 钮钳塞销 | 1 | B2543-372-000-A | Pick-up device stopper pin |
| 35 | 409S30002 | 钮钳调压杆 | 1 | B2544-372-000 | Button clamp pressure adjuseting |
| 36 | 40927002 | 调压弹簧 | 1 | B2545-372-000 | Pressure adjusting spring |
| 37 | 409S16003 | 用于钮钳调压杆的螺母 | 2 | NS-6660511-SP | Nut 1/4 |
| 38 | 40927003 | 手指保护架 | 1 | B3130-372-000-B | Finger guard |

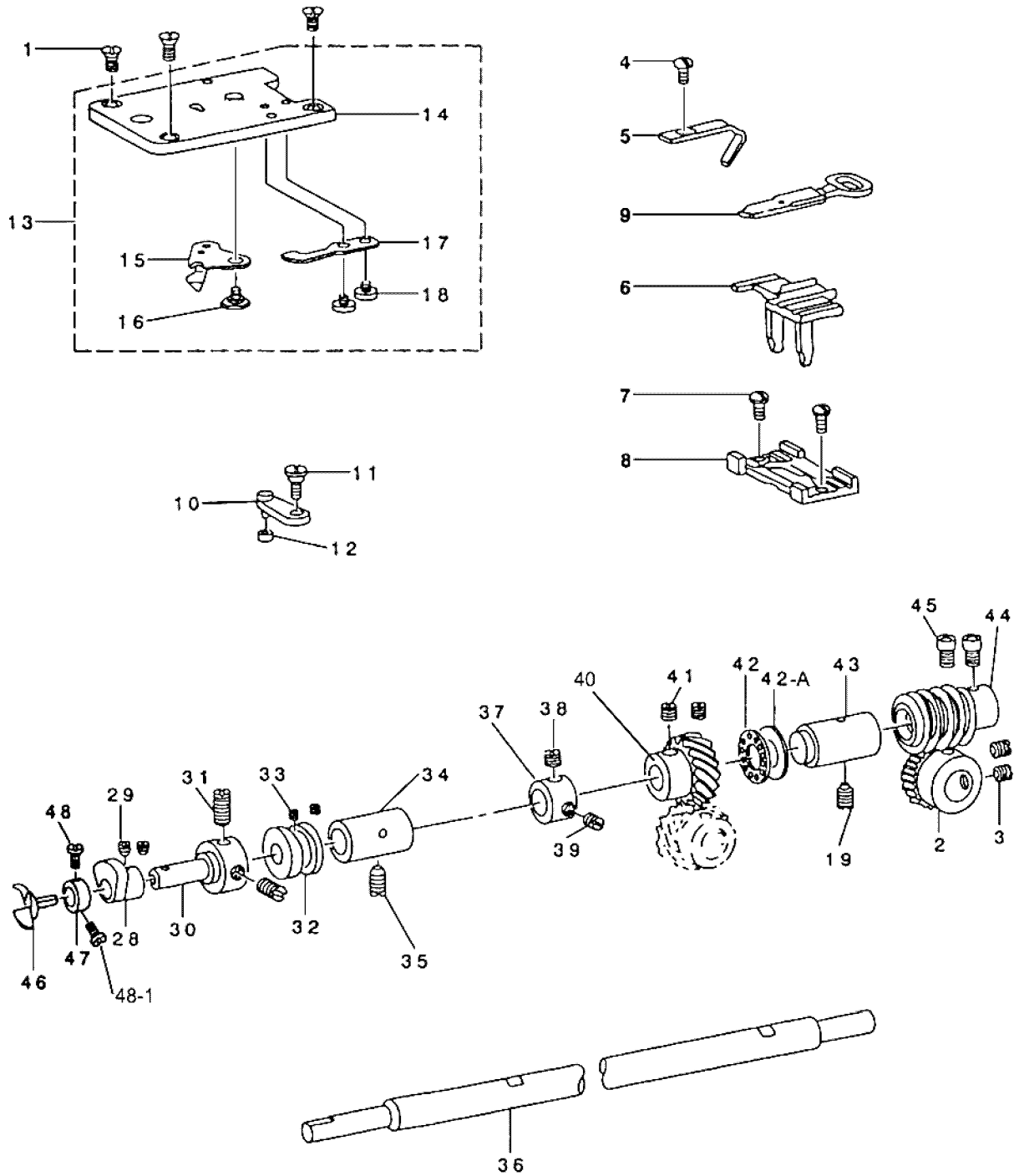
二、机壳部件/Arm & miscellaneous cover components



第二部件 机壳部件

| 序号 | 零件件号 | 名称 | 数量 | 同类编号 | Description |
|----|------------|----------|----|-----------------|----------------------------------|
| 1 | 4091201000 | 面板组件 | 1 | B260-38752 | Face plate |
| 2 | 409S11003 | 螺钉 | 4 | SS-4120915-SP | Screw 3/16-28 L=9 |
| 3 | 40927004 | 弹簧 | 1 | B3149-123-A00 | Tension sprig |
| 4 | 40902003 | 夹线螺栓 | 1 | B3127-372-000 | Nipper releasing stud |
| 5 | 4091201200 | 第三夹线导向组件 | 1 | 260-01164 | Nipper releasing guide NO.3 asm. |
| 6 | 40913001 | 第三夹线底座 | 2 | 260-01404 | Nipper releasing dics NO.3 |
| 7 | 40927004 | 第三夹线弹簧 | 1 | 260-01305 | Nipper releasing spring NO.3 |
| 8 | H05007 | 开口挡圈3 | 1 | ---- | E-ring 3 |
| 9 | 409S11004 | 螺钉 | 1 | SS-7110340-SP | Screw 11/64-40 L=3.2 |
| 10 | 40913002 | 第四线导向装置 | 1 | B3108-372-000 | Thread guide NO.4 |
| 11 | ×××× | 第三夹线组件 | 1 | B3109-372-0A0 | Thread tension NO.3 asm. |
| 12 | ×××× | 第三夹线调节底座 | 1 | 178-02216 | Tension adjusting base NO.3 |
| 13 | ×××× | 线调压板 | 1 | 101-29104 | Thread presser plate |
| 14 | ×××× | 夹线弹簧B | 1 | B1136-850-000 | Tension sprig B |
| 15 | ×××× | 夹线螺栓 | 1 | 250-02809 | Thread tension stud |
| 16 | ×××× | 夹线螺母 | 1 | 250-02808 | Thread tension nut |
| 17 | H05007 | 开口挡圈3 | 1 | ---- | E-ring 3 |
| 18 | 409S11003 | 螺钉 | 8 | SS-4120915-SP | Screw 3/16-28 L=9 |
| 19 | ×××× | 接地标记 | | 100-04109 | Ground mark |
| 20 | 300146 | 左盖板 | 1 | 260-12104 | Side plate, left |
| 21 | 20131063 | 安全标牌 | 1 | CM-3002001-B1 | Safety label 12 |
| 22 | 300147 | 右盖板 | 1 | 260-12005 | Side plate, right |
| 23 | S05024 | 螺钉M8×30 | 4 | SM-6083042-CH | Screw M8 L=30 |
| 25 | P02002 | 销6×32 | 2 | ---- | Guide pin |
| 26 | 409S30003 | 连接螺栓 | 1 | B1128-372-000 | Set screw |
| 27 | 40912016 | 底座防油罩 | 1 | B1119-373-000 | Bed oil shield |
| 28 | 412S14002 | 螺钉 | 2 | SS-8150710-SP | Screw 15/64-28 L=7 |
| 29 | 4091100100 | 纽扣盘组件 | 1 | 1780-18458 | Button tray asm. |
| 30 | 40926002 | 凸轮指示销 | 1 | B2504-372-00A | Cam indicating pin |
| 31 | 40926002 | 凸轮指示销 | 1 | B2504-372-00A | Cam indicating pin |
| 32 | 409S11005 | 螺钉 | 1 | SS-7110840-SP | Screw 11/64-40 L=7.8 |
| 33 | 40923001 | 油毡 | 1 | B3503-372-0A0-A | Oil supply felt |
| 34 | 40912017 | 盖板卡簧 | 1 | B1127-372-000-A | Side cover spring |
| 35 | 40912017 | 盖板卡簧 | 1 | B1127-372-000-A | Side cover spring |
| 36 | 409S11006 | 螺钉 | 2 | SS-7120640-SP | Screw 3/16-28 L=6 |
| 37 | 409S11007 | 螺钉 | 2 | SS-4110815-SP | Screw 11/64-40 L=8 |
| 38 | 40923002 | 滴油毡 A | 1 | B1104-372-A00 | Oil drip felt (A) 5MM |
| 39 | ×××× | 滴油毡B | | B1104-372-B00 | Oil drip felt (A) 7MM |
| 40 | 409S20006 | 螺钉 | 1 | SD-0600271-SP | Hinge screw D=6 |
| 41 | 40911003 | 右滑轮盖 | 1 | 260-11502 | Side cover, right |
| 42 | 40902005 | 滑轮盖合叶杆 | 1 | B1110-372-000 | Side cover hinge shaft |
| 43 | ×××× | 滑轮盖合叶杆 | 1 | B1110-377-000 | Side cover hinge left |
| 44 | 412S14002 | 螺钉 | 2 | SS-8150710-SP | Screw 15/64-28 L=7 |
| 45 | 40901004 | 机器次底座 | 1 | B1103-372-000 | Machine sub-base |
| 46 | 412S14002 | 螺钉 | 2 | SS-8150710-SP | Screw 15/64-28 L=7 |
| 47 | 40228001 | 弹簧垫圈 | 3 | WS-0650389-KP | Spring washer 6.5×14×17 |
| 48 | 40911004 | 左盖 | 1 | 260-11403 | Side cover left |
| 49 | 40912018 | 底座活动盖 | 1 | 260-03608 | Looper cover |
| 50 | ×××× | 安全板组件 | 1 | B3115-372-000 | Safety plate asm. |

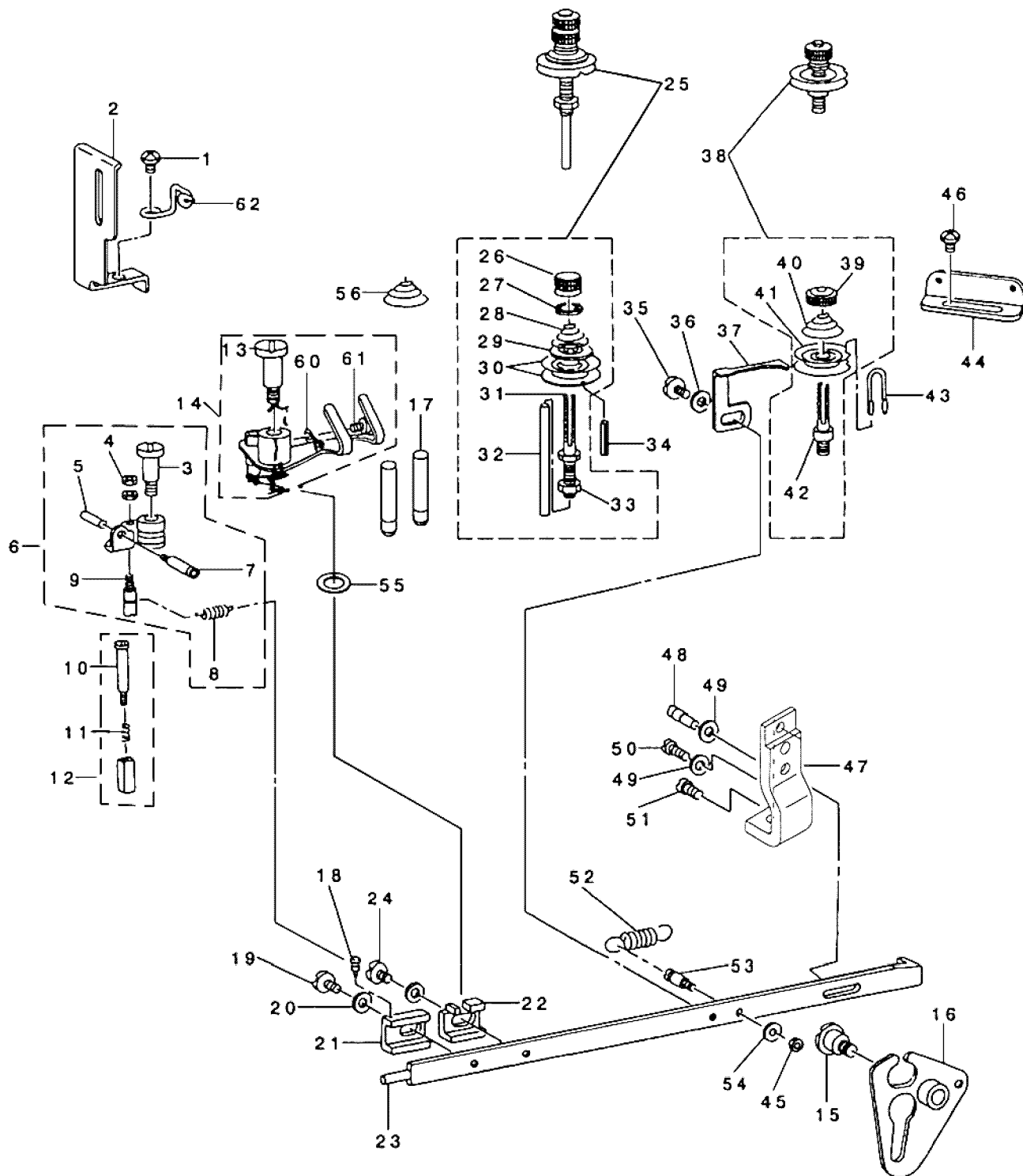
三、上轴机构部件/Looper shaft mechanism components



第三部件 上轴机构部件

| 序号 | 零件件号 | 名称 | 数量 | 同类编号 | Description |
|------|------------|----------------|----|-----------------|--------------------------------|
| 1 | 409S11009 | 螺钉 | 3 | SS-2110920-TP | Screw 11/64-40 L=8.5 |
| 2 | 40925001 | 凸轮轴从动齿轮 | 1 | B1220-372-000 | Cam shaft driven gear |
| 3 | 409S14001 | 螺钉 | 2 | SS-8660612-TP | Screw 1/4-40 L=6 |
| 4 | 409S11010 | 螺钉 | 1 | SS-7110840-SP | Screw 11/64-40 L=7.8 |
| 5 | 40912021 | 导向线杆（打捆针导向器） | 1 | B1242-373-000 | Needle guard |
| 6 | 40909001 | 插入导向滑板（手指定位軛铁） | 1 | B1236-373-000 | Positioning finger yoke slide |
| 7 | 409S17001 | 螺钉 | 2 | SS-1110710-SP | Screw 11/64-40 L=7.8 |
| 8 | 40909002 | 导向卡箍（压铁插孔） | 1 | B1235-373-000 | Yoke slide insert |
| 9 | 40912022 | 滑块（軛铁片） | 1 | B1237-373-000 | Yoke slide |
| 10 | 4090500100 | 环线定位杆组件 | 1 | B1230-372-0A0 | Loop positioning finger lever |
| 11 | 409S20008 | 螺钉 | 1 | SD-0640241-SP | Hinge screw D=6.35 H=2.4 |
| 12 | 40903003 | 滚环 | 1 | B1232-372-000 | loop positioning finger lever |
| 13 | ×××× | 喉板组件 | 1 | B1241-372-0B0 | Throat plate asm. |
| 14 | 40901005 | 喉板 | 1 | B1241-373-000 | Throat plate |
| 15 | 4091900100 | 可动刀组件 | 1 | B2406-373-000 | Moving knife asm. |
| 16 | 409S20009 | 螺钉 | 1 | SD-0600095-TH | Hinge screw D=6 H=0.85 |
| 17 | 40919003 | 固定刀片 | 1 | B2410-373-000 | Counter knnife |
| 18 | 409S11011 | 螺钉 | 2 | SS-7080310-SP | Screw 1/8-44 L=3.0 |
| 19 | 401S14001 | 螺钉 | 1 | SS-8151150-SP | Screw 15/64-28 L=10.5 |
| 28 | 40910001 | 环形凸轮 | 1 | B1234-372-000 | Loop positioning finger cam |
| 29 | 409S14002 | 螺钉 | 2 | SS-8110410-TP | Screw 11/64-40 L=3.5 |
| 30 | 40902006 | 连接轴 | 1 | B1233-372-000 | Cam & looper sleeve |
| 31 | 409S15004 | 螺钉 | 2 | SS-8110410-TP | Screw 15/94-28 L=4.0 |
| 32 | 40910002 | 后凸轮 | 1 | B1228-372-000 | Loop positioning finger cam re |
| 33 | 409S14002 | 螺钉 | 2 | SS-8110310-SP | Screw 11/64-40 L=2.8 |
| 34 | 40903004 | 前轴套 | | B1227-372-000 | Looper shaft bushing, front |
| 35 | 401S14001 | 螺钉 | 1 | SS-8151150-SP | Screw 15/64-28 L=10.5 |
| 36 | 40902007 | 钩线轴 | | B1219-372-000-A | Looper shaft |
| 37 | 40908001 | 挡圈 | 1 | CS-1111019-SH | Thrust collar D=11.11 W=10 |
| 38 | 409S14003 | 螺钉 | 1 | SS-8660512-TP | Screw 1/4-40 L=5 |
| 39 | 409S14003 | 螺钉 | 1 | SS-8660512-TP | Screw 1/4-40 L=5 |
| 40 | 40925002 | 勾线轴齿轮 | 1 | B1224-372-0A0 | Looper shaft driven gear asm. |
| 41 | 409S14001 | 螺钉 | 2 | SS-8660512-TP | Screw 1/4-40 L=6 |
| 42 | 40928004 | 轴承垫圈 | 1 | B1215-372-A00 | Thrust ball bearing |
| 42-A | 40924001 | 端面轴承 | 1 | B1215-372-A00 | Thrust ball bearing |
| 43 | 40903005 | 轴套（后） | 1 | B1222-372-000 | Looper shaft bushing, rear |
| 44 | 40925003 | 从动蜗轮 | 1 | B1221-372-000 | Driven worm gear |
| 45 | 409S14001 | 螺钉 | 2 | SS-6660712-TP | Screw 1/4-40 L=7.0 |
| 46 | 40917001 | 钩圈 | 1 | B1239-372-000 | Looper |
| 47 | 40908002 | 挡圈 | 1 | CS-0790721-TH | Thrust collar D=7.94 W=7 |
| 48 | 409S11012 | 螺钉 | 1 | SS-7090620-TP | Screw 9/64-40 L=6.1 |
| 48-1 | 409S11031 | 螺钉 | 1 | SS-7090620-TP | Screw 9/64-40 L=3.5 |

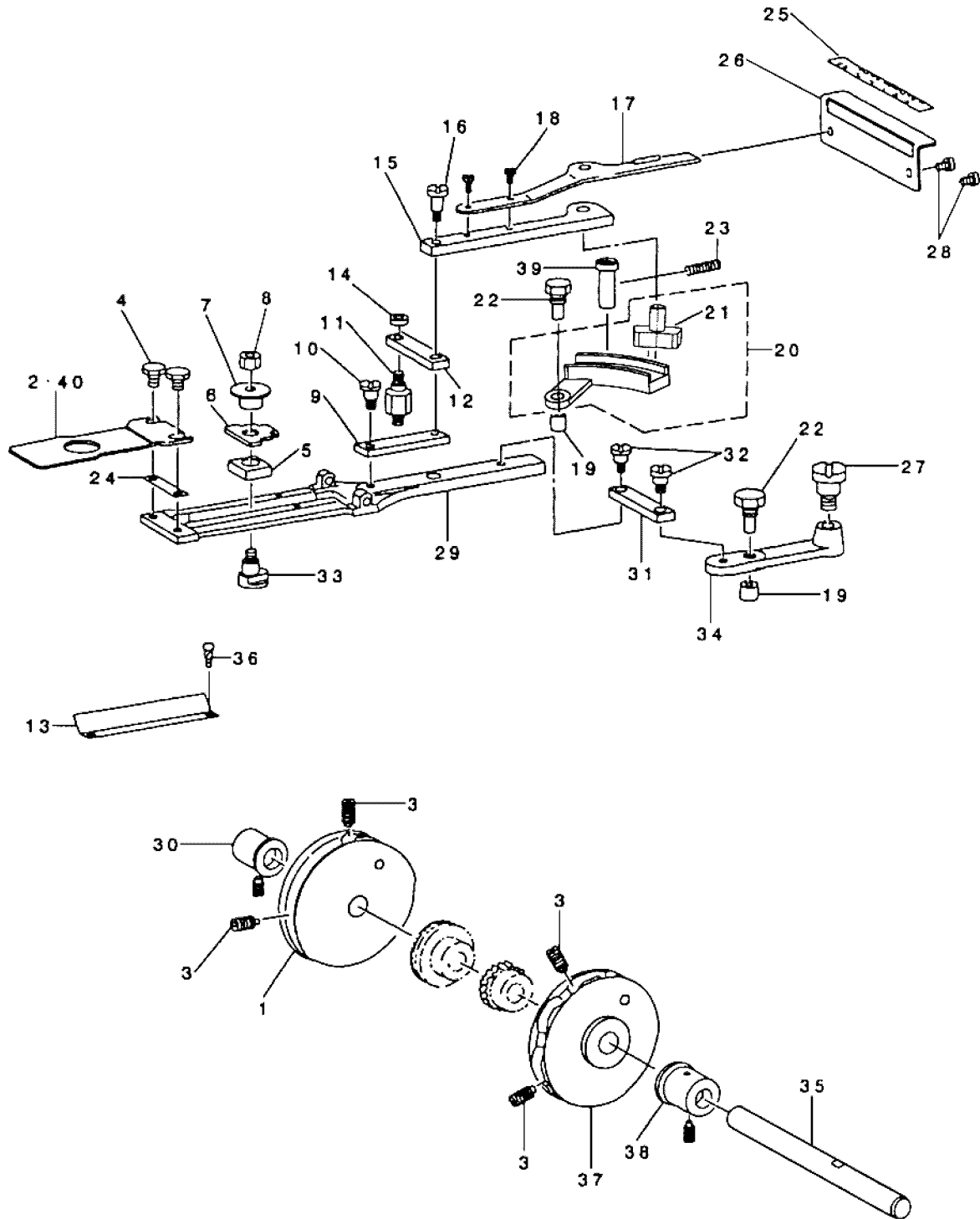
四、绕线和过线部件/Nipper & tension parts components



第四部件 绕线和过线机构部件

| 序号 | 零件件号 | 名称 | 数量 | 同类编号 | Description |
|----|------------|-----------|----|-----------------|---------------------------------|
| 1 | 409S11013 | 螺钉 | 1 | SS-4150915-SP | Screw 15/64-28 L=9 |
| 2 | 40912024 | 针杆护罩 | 1 | B1421-372-000 | Needle bar guard |
| 3 | 409S20010 | 螺钉 | 1 | SD-0791271-SP | Hinge screw D=7.94 H=12.7 |
| 4 | 409S16005 | 螺钉 | 2 | NS-6080210-SP | Nut 1/8-44 |
| 5 | 409S16006 | 放线螺母 | 1 | B2035-372-000 | Nut |
| 6 | 4091202500 | 导线装置组件 | 1 | 260-00950 | Nipper compl |
| 7 | 409S20011 | 放线螺栓 | 1 | B2034-372-000 | Thread releasing screw stud |
| 8 | 40927007 | 夹线杆底座弹簧 | 1 | B2037-372-000 | Nipper bar block spring |
| 9 | 409S30004 | 夹线杆底座弹簧螺钉 | 1 | B1236-372-000 | Nipper bar block spring screw |
| 10 | 409S20012 | 螺钉 | 1 | SD-0402001-TP | Hinge screw D=4 H=20 |
| 11 | 40927008 | 夹线座弹簧 | 1 | B2029-372-000 | Nipper block spring |
| 12 | 40909003 | 夹线座 | 1 | B2028-372-000 | Nipper block |
| 13 | 409S20013 | 螺钉 | 1 | SD-0791503-SP | Hinge screw D=7.94 H=15 |
| 14 | 4091300400 | 引线杆组件 | 1 | 260-01560 | Thread pull-off lever asm. |
| 15 | 409S20014 | 驱动杆螺栓 | 1 | SD-0790802-SP | Hinge screw D=7.94 H=8 |
| 16 | 4091202700 | 夹线杆驱动板组件 | 1 | 260-00455 | Nipper bar actuating lever asm. |
| 17 | 40926006 | 导线杆 | 2 | B2024-372-000-A | Thread guide pin |
| 18 | 40926007 | 夹线杆底座弹簧销 | 1 | B2012-372-000 | Nipper bar block spring pin |
| 19 | 409S11014 | 螺钉 | 1 | SS-6120930-TP | Screw 3/16-28 L=9 |
| 20 | 40928004 | 垫圈 | 2 | WP-0501016-SD | Washer 5×10.5×1 |
| 21 | 40912029 | 夹线杆底座 | 1 | B2011-372-000 | Nipper bar block |
| 22 | 40912030 | 夹线杆底座(后) | 1 | B2010-372-000 | Tension lever rocking piece |
| 23 | 40912031 | 夹线杆 | 1 | 260-01909 | Nipper bar |
| 24 | 409S11014 | 螺钉 | | SS-6120930-TP | Screw 3/16-28 L=9 |
| 25 | 4091300600 | 2号夹线杆组件 | 1 | B2019-372-0A0 | Tension post asm. NO.2 |
| 26 | 409S16007 | 调节螺母 | 1 | B3116-372-000 | Tension nut |
| 27 | 40912032 | 夹线制动板 | 1 | 229-214070 | Rotation stopper |
| 28 | 40927009 | 2号夹线压力弹簧 | 1 | B2021-372-000 | Thread tension spring NO.2 |
| 29 | 40912033 | 夹线提升垫片 | 1 | B3132-012-000 | Tension disc holder |
| 30 | 40913007 | 夹线圆盘 | 2 | B2016-372-000 | Tension disc |
| 31 | 409S30006 | 2号夹线杆 | 1 | B2019-372-000 | Tension post NO.2 |
| 32 | 40926008 | 松线轴钉 | 1 | B2020-372-000 | Tension relese pin |
| 33 | 409S16008 | 平衡轴螺母 | 1 | NS-6160520-SP | Nut 1/4-24 |
| 34 | P03009 | 销2×16 | 1 | PS-0300162-KH | Spring pin 3×6 |
| 35 | 409S11014 | 螺钉 | 1 | SS-6120930-TP | Screw 3/16-28 L=9 |
| 36 | 40928004 | 垫圈 | 1 | WP-0501016-SD | Washer 5×10.5×1 |
| 37 | 40912034 | 释压杆 | 1 | B2029-372-000 | Thread tension releasing lever |
| 38 | 4091300800 | 1号夹线器组件 | 1 | 260-05157 | Thread tension asm. (NO.1) |
| 39 | 409S16009 | 夹线螺母 | 1 | B3125-012-000 | Thread tension nut |
| 40 | 40927010 | 1号夹线弹簧 | 1 | B2017-372-000 | Tension spring NO.1 |
| 41 | 40913007 | 夹线圆盘 | 2 | B2016-372-000 | Tension disc |
| 42 | 409S30007 | 1号夹线器轴 | 1 | B2015-372-000 | Thread tension staff NO.1 |
| 43 | 40913009 | 导线钩 | | B2014-372-000-A | Thread guide pin |
| 44 | 40913010 | 二眼线板 | 1 | B2039-373-000 | Thread guide NO.1 |
| 45 | 409S16010 | 螺母 | 1 | NS-6080340-SP | Nut 1/8-44 |
| 46 | 409S11013 | 螺钉 | | SS-4150915-SP | Screw 15/64-28 L=9 |
| 47 | 40912035 | 夹线杆滑块 | 1 | B2005-372-000 | Nipper bar bearing block |
| 48 | 409S30008 | 调节螺钉 | 1 | B2006-372-000 | Adjusting screw |
| 49 | 40928005 | 垫圈 | 2 | WP-0480856-SP | Washer 4.8×8.4×0.8 |

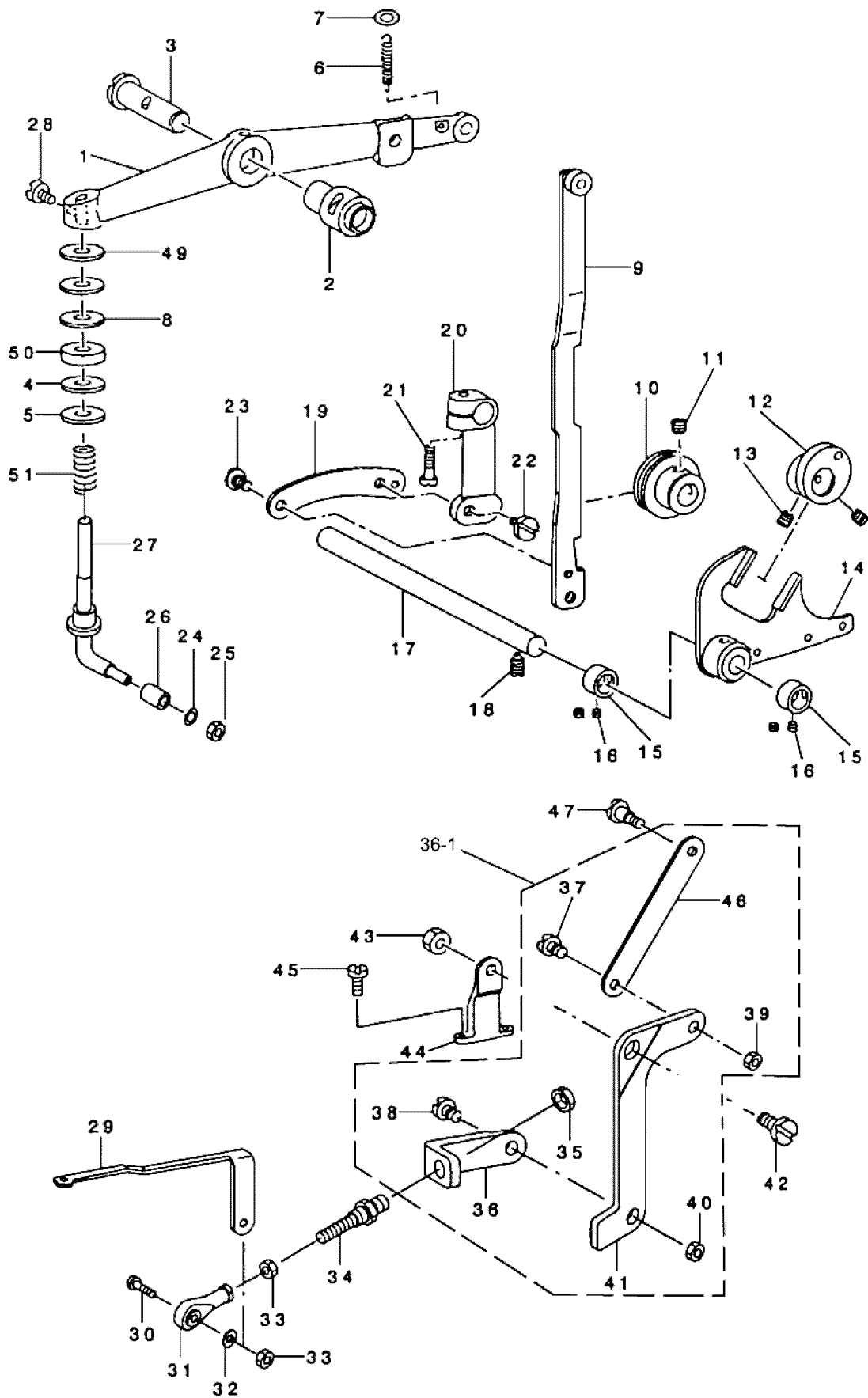
五、送料盘部件/Feed plate components



第五部件 送料盘机构部件

| 序号 | 零件件号 | 名称 | 数量 | 同类编号 | Description |
|-----|------------|------------|----|-----------------|-----------------------------------|
| 1 | 40910005 | 纵向送料凸轮（十字） | 1 | ---- | Longitudinal feed cam |
| 1-1 | 40910004 | 纵向送料凸轮（一字） | 1 | B2506-373-000-A | Longitudinal feed cam |
| 2 | 40915001 | 钮扣送料板 | 1 | B2529-373-000 | Feed plate, small button |
| 3 | 409S14005 | 螺钉 | 4 | SS-8681412-TP | Screw 9/32-28 L=13.5 |
| 4 | 409S12003 | 螺钉 | 2 | SS-9120643-TP | Screw 3/16-28 L=6 |
| 5 | 40909004 | 指示器销滑块 | 1 | B2524-372-000 | Indicator pin bearing block |
| 6 | 40912036 | 交叉送料指示器 | 1 | B2525-373-N00 | Crosswise feed indicator |
| 7 | 40903010 | 指示器销 | 1 | B2526-372-000 | Crosswise feed indicator pin |
| 8 | 409S16012 | 螺母 | 1 | NS-6160520-SP | Nut 1/4-24 |
| 9 | 400110 | 滑板连接杆 | 1 | B2518-372-000-A | Slide plate connecting link |
| 10 | 409S20015 | 合叶螺钉 | 1 | SD-0640481-SP | Hinge screw D=6.35 H=9.6 |
| 11 | 409S30010 | 双头螺栓 | 1 | B2521-372-000 | Stud |
| 12 | 40909006 | 连接杆 | 1 | B2519-372-000 | Intermedi connecting link |
| 13 | 40937001 | 交叉送料刻度盘 | 1 | B2528-372-000-A | Crosswise feed graduated link |
| 14 | 409S16013 | 螺母 | 1 | NS-6120630-SP | Nut 3/16-28 |
| 15 | 4091203700 | 手柄及指示器弹簧手柄 | 1 | B2513-372-000 | Indicator spring connecting link |
| 16 | 409S20016 | 合叶螺钉 | 1 | SD-0640961-SP | Hinge screw D=6.35 H=9.6 |
| 17 | 40912039 | 送料调节手柄 | 1 | B2515-372-000 | Handle & indicator spring |
| 18 | 409S11018 | 螺钉 | 2 | SS-4090615-SP | Screw 9/64-40 L=6 |
| 19 | 40903012 | 凸轮滚碾 | 2 | B2507-372-000 | Cam roll |
| 20 | 40909007 | 纵向送料杆滑块座 | 1 | B2511-372-0A0 | Lengthwise feed lever asm. |
| 21 | 40909008 | 纵向送料杆滑块 | 1 | B2512-372-000 | Lengthwise feed lever slide block |
| 22 | 409S30011 | 凸轮滚碾螺栓 | 2 | B2508-372-000 | Cam roll screw stud |
| 23 | 409S15005 | 螺钉 | 1 | SS-8152030-SP | Screw 15/64-28 L=6 |
| 24 | 40912040 | 隔离板 | 1 | B2717-377-000 | Spacer |
| 25 | 40937002 | 纵向送料刻度标盘 | 1 | B2563-372-000 | Lengthwise feed graduate plate |
| 26 | 40937004 | 纵向送料刻度盘 | 1 | B2564-373-000 | Plate base |
| 27 | 409S20017 | 螺钉 | 1 | SD-0791051-SP | Hinge screw D=7.94 H=10.5 |
| 28 | 409S11003 | 螺钉 | 2 | SS-4120615-SP | Screw 3/16-28 L=6 |
| 29 | 40901006 | 滑板 | 1 | B2522-373-000-A | Feed plate |
| 30 | 40903013 | 凸轮轴左轴衬 | 1 | B2503-372-000 | Cam shaft bushing, left |
| 31 | 40909006 | 连接杆 | 1 | B2519-372-000 | Intermedi connecting link |
| 32 | 409S20015 | 合叶螺钉 | 2 | SD-0640481-SP | Hinge screw D=6.35 H=4.8 |
| 33 | 409S30012 | 合叶螺钉 | 1 | B2523-372-000 | Hinge screw for crosswise feed |
| 34 | 40901007 | 交叉送料杆 | 1 | B2510-372-000-A | Crosswise feed lever |
| 35 | 40902008 | 凸轮轴 | 1 | B2501-372-000-A | Cam shaft |
| 36 | R01002 | 铆钉2×4 | 2 | GB/T863.1-1986 | Rivet |
| 37 | 40910006 | 交叉送料凸轮 | 1 | B2505-373-000-A | Lateral feede cam |
| 38 | 40903015 | 凸轮轴右轴衬 | 1 | B2502-372-000 | Cam shaft bushing, right |
| 39 | 40926010 | 杆销 | 1 | B2509-372-000-A | Feed plate medium size button |

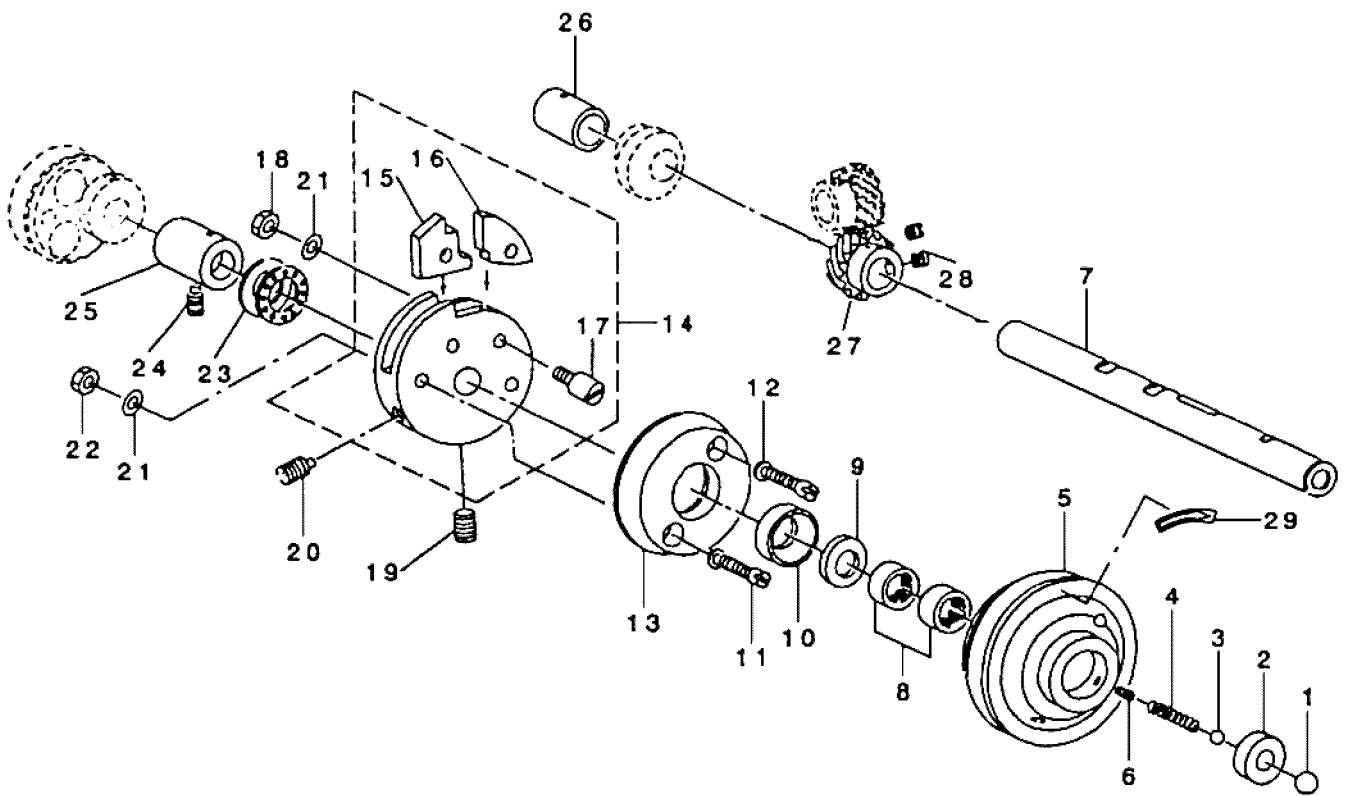
六、钮钳提升部件/Button clamp lifter components



第六部件 钮钳提升部件

| 序号 | 零件件号 | 名称 | 数量 | 同类编号 | Description |
|------|------------|--------------|----|-----------------|-----------------------------------|
| 1 | 40901008 | 钮钳提升杆 | 1 | B4412-373-000-A | Lifting lever |
| 2 | 40903016 | 轴衬 | 1 | B1407-372-000 | Bushing |
| 3 | 40902009 | 提升杆轴 | 1 | B1408-372-000 | Lifting lever shaft |
| 4 | ×××× | 垫圈 | 1 | ---- | Washer 7.5×19×1.5 |
| 5 | ×××× | 垫圈 | 1 | ---- | Washer 8.5×22×1.8 |
| 6 | 40927012 | 火线杆动作杆弹簧 | 1 | B4419-372-000 | Nipper bar actuating lever spring |
| 7 | 40912032 | 火线制动板 | 1 | 229-214070 | Washer |
| 8 | ×××× | 垫圈 | 1 | ---- | Washer 7×20×4 |
| 9 | 40912041 | 钮钳提升连杆 | 1 | B4411-372-000 | Button clamp lifting link |
| 10 | 40903018 | 滑动滚筒 | 1 | B4410-372-000 | Slide roller |
| 11 | 409S14001 | 螺钉 | 2 | SS-8660612-TP | Screw 1/4-40 L=6 |
| 12 | 40910007 | 偏心轮组件 | 1 | 260-03301 | Eccentric cam asm. |
| 13 | 409S14001 | 螺钉 | 2 | SS-8660612-TP | Screw 1/4-40 L=6 |
| 14 | 4090900900 | 钮钳提升连杆驱动离心组件 | 1 | B4401-372-000 | Button clamp lifting link |
| 15 | 40908003 | 止推环(挡圈) | 2 | CS-090816-SH | Thrust collars D=9.5 W=8 |
| 16 | 409S14002 | 螺钉 | 4 | SD-0600095-TH | Screw 11/64-40 L=3.5 |
| 17 | 40902010 | 驱动轴 | 1 | B4404-372-000-A | Lever shaft |
| 18 | 401S14001 | 螺钉 | 1 | SS-8151150-SP | Screw 15/64-28 L=10.5 |
| 19 | 40905003 | 钮钳提升杆连杆 | 1 | B4408-372-000 | lifting link connecting link |
| 20 | 40904001 | 啮合钮钳提升连接杆 | 1 | B4406-372-000-C | Lifting plate guide rod |
| 21 | 409S11020 | 螺钉 | 1 | SS-6121610-TP | Screw 3/16-28 L=15.5 |
| 22 | 409S20015 | 合叶螺钉 | 1 | SD-0640481-SP | Hinge screw D=6.35 H=4.8 |
| 23 | 409S20019 | 合叶螺丝 | 1 | SD-0640211-SP | Hinge screw D=6.35 H=2.1 |
| 24 | 40928014 | 垫圈 | 1 | B8220-804-000 | Washer 7×20×3.5 |
| 25 | 409S16014 | 螺母 | 1 | WP-0480856-SP | Nut |
| 26 | 40903020 | 钮钳提升杆滚筒 | 1 | B4417-372-000 | Button clamp lifting rod roll |
| 27 | 4090201100 | 钮钳提升杆钩组件 | 1 | 260-00653 | Button clamp lifting rod compl |
| 28 | S05023 | 螺钉M6X10 | 1 | GB/T70-1985 | Screw M6 L=10 |
| 29 | 40912042 | 前切线连接杆 | 1 | B2404-373-R00 | Connecting link, front |
| 30 | L01002 | 螺栓M5×8 | 1 | B2413-373-000 | Joint stud |
| 31 | 4030500500 | 送料调节连接体组件 | 1 | B1632-180-000 | Feed adjusting joint |
| 32 | 40928010 | 垫片 | 1 | WP-0510516-SD | Washer 5.1×7.5×0.5 |
| 33 | N01004 | 螺母M5 | 2 | NM-6050001-SP | Nut M5 |
| 34 | 409S30013 | 连接螺钉 | 1 | B2412-373-000 | Connecting link, rear |
| 35 | 409S16015 | 螺母 | 2 | NS-6680410-SP | Nut 9/32-28 |
| 36 | 40912043 | 后切线连接杆 | 1 | B2503-373-000-A | Connecting link, rear |
| 36-1 | 4091204300 | 后切线连接杆组件 | 1 | B2503-373-000-A | Connecting link asm. |
| 37 | 409S20020 | 合叶螺丝 | 1 | SD-0640323-TP | Hinge screw D=6.35 H=3.2 |
| 38 | 409S20021 | 合叶螺丝 | 1 | SD-0790402-TP | Hinge screw D=7.94 H=4 |
| 39 | 409S16016 | 螺母 | 1 | NS-6620310-SP | Nut 3/16-32 |
| 40 | 409S16017 | 螺母 | 1 | NS-6150310-SP | Nut 15/64-28 |
| 41 | 40912044 | 切线杆 | 1 | 260-02006 | Thread trimming lever |
| 42 | 409S20022 | 合叶螺丝 | 1 | SD-0790311-TP | Hinge screw D=7.94 H=3.1 |
| 43 | 409S16018 | 螺母 | 1 | NS-6110420-SP | Nut 11/64-40 |
| 44 | 40901009 | 切线杆底座 | 1 | B2405-373-000 | Thread trim base |
| 45 | 409S11021 | 螺钉 | 2 | SS-7111410-TP | Screw 11/64-40 L=14 |
| 46 | 40905006 | 切线连杆 | 1 | B2401-373-000 | Thread trimming link |
| 47 | 409S20023 | 合叶螺丝 | 1 | SD-0641322-TP | Hinge screw D=6.35 H=13.2 |
| 49 | ×××× | 垫圈 | 1 | ---- | Washer 7×20×4.5 |

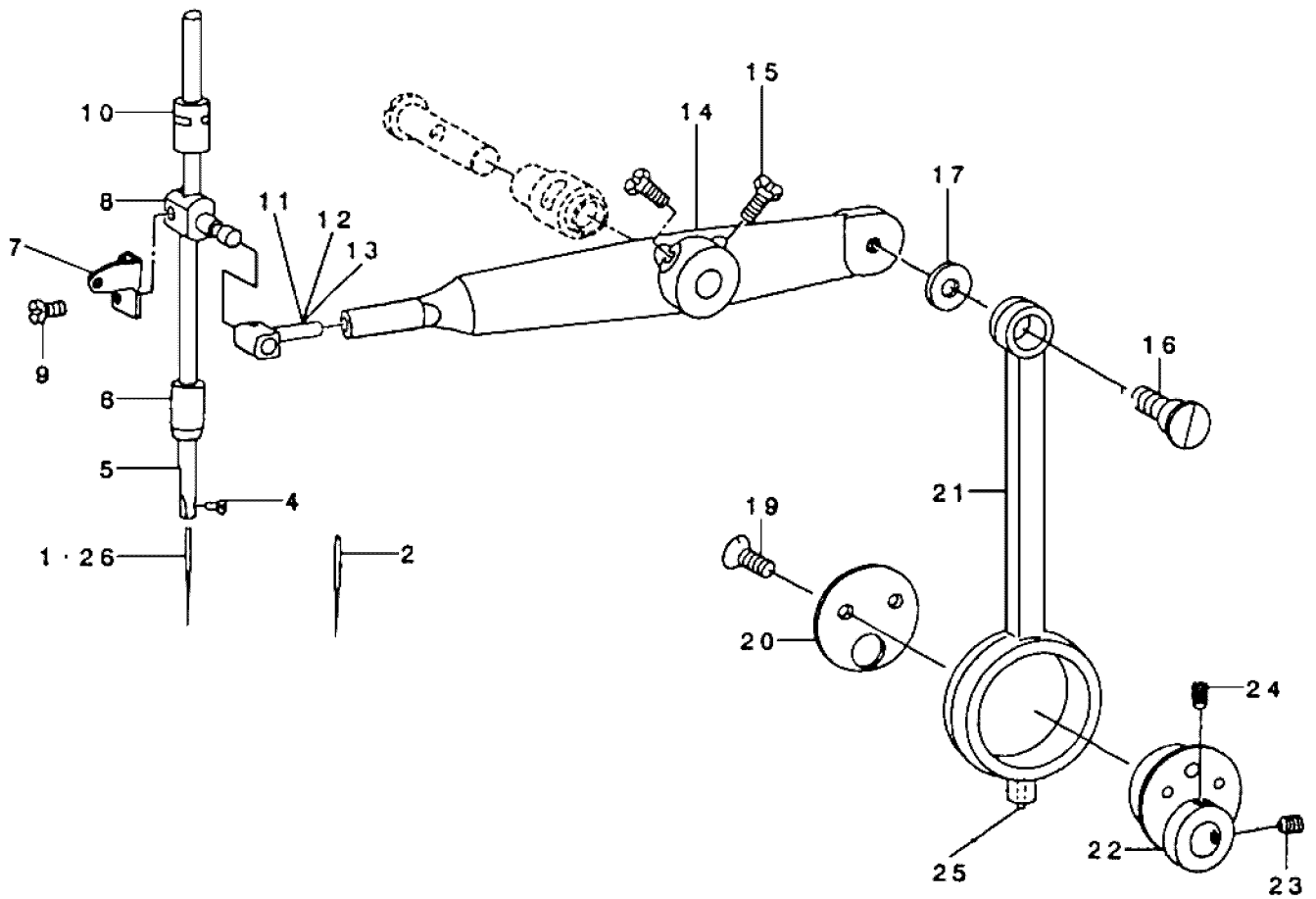
七、推针滑轮轴部件/Needle driving pulley shaft components



第七部件 推针滑轮轴部件

| 序号 | 零件件号 | 名称 | 数量 | 同类编号 | Description |
|------|------------|---------|----|---------------|--------------------------------|
| 1 | 40909011 | 大滚珠 | 1 | B1203-372-000 | Ball large |
| 2 | 40909012 | 驱动转筒轴承座 | 1 | B1204-372-000 | Pulley insert |
| 3 | 40909013 | 小滚珠 | 1 | B1246-372-000 | Ball small |
| 4 | 40927014 | 弹簧 | 1 | B1205-372-000 | Spring |
| 5 | 40935001 | 驱针转筒滑轮 | 1 | B1202-372-000 | Needle driving pulley |
| 6 | 409S14002 | 螺钉 | 1 | SS-8110750-SP | Screw 11/64-40 L=6.5 |
| 7 | 40902013 | 驱针滑轮轴 | 1 | B1201-373-000 | Needle driving pulley shaft |
| 8 | 40924002 | 滚针轴承 | 2 | B1243-372-000 | Needle bearing |
| 9 | 40923005 | 防油毡 | 1 | B1206-372-000 | Grease retaining wick |
| 10 | 40912045 | 密封垫 | 1 | B1207-372-000 | Retaining washer |
| 11 | 409S11022 | 螺钉 | 2 | SS-6152440-SP | Screw 15/64-28 L=23.5 |
| 12 | 40928011 | 垫圈 | 4 | WP-0621026-SP | Washer 6.2×9.5×1 |
| 13 | 4092200200 | 滑轮离合器组件 | 1 | B1208-372-000 | Needle driving pulley clutch D |
| 14-1 | 4091001300 | 止动圆盘 | 1 | B1210-372-000 | Stop motion disc asm. |
| 15 | 40909014 | 止动圆盘止动爪 | 1 | B1211-372-000 | Stop motion disc pawl(A) |
| 16 | 40909015 | 止动圆盘销 | 1 | B1212-372-000 | Stop motion disc pawl(B) |
| 17 | 409S20024 | 螺钉 | 2 | B1213-372-000 | Screw |
| 18 | 402S16003 | 螺母 | 2 | NS-6150430-SP | Nut 15/64-28 |
| 19 | 409S14009 | 定位螺钉 | 1 | SS-8707042-TP | Screw 5/16-24 L=10 |
| 20 | 409S14010 | 紧固螺钉 | 1 | SS-8701782-TP | Screw 5/16-24 L=17 |
| 21 | ×××× | 弹性垫圈 | 2 | WS-0651310-KP | Spring washer 6.5×11×1.3 |
| 22 | 409S16019 | 螺母 | 2 | NS-6150430-SP | Nut 15/64-28 |
| 23 | 40928004 | 轴承垫圈 | 1 | B1215-372-A00 | Thrust ball bearing |
| 23-1 | 40924001 | 端面轴承 | 1 | B1215-372-A00 | Thrust ball bearing |
| 24 | 401S14001 | 螺钉 | 1 | SS-8151150-SP | Screw 15/64-28 L=10.5 |
| 25 | 40903024 | 驱动轴右轴套 | 1 | B1216-372-000 | Pulley shaft bushing, right |
| 26 | 40903025 | 驱动轴左轴套 | 1 | B1223-372-000 | Pulley shaft bushing, left |
| 27 | 40925004 | 驱动齿轮 | 1 | B1217-372-0A0 | Driving gear asm. |
| 28 | 409S14001 | 螺钉 | 2 | SS-8660612-TP | Screw 1/4-40 L=6 |
| 29 | ×××× | 方向标签 | 1 | CM-5022000-01 | Direction label |

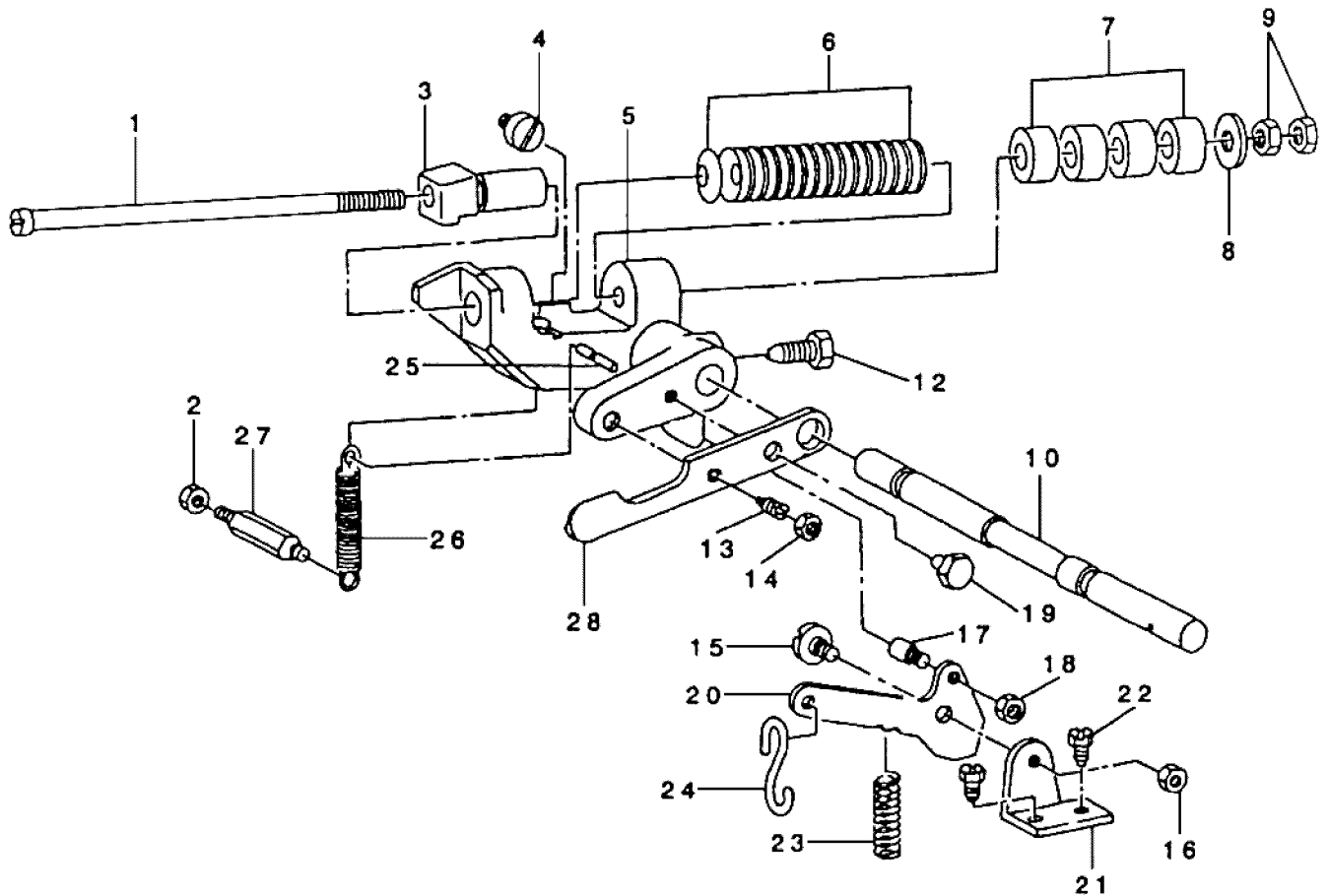
八、针杆驱动机构部件/Needle bar driving mechanism components



第八部件 针杆驱动机构部件

| 序号 | 零件件号 | 名称 | 数量 | 同类编号 | Description |
|----|-----------|---------|----|-----------------|----------------------------|
| 1 | 41017004 | 机针 | 1 | MTQ-700B1800 | Needle TQ×7 #16 |
| 2 | ×××× | 机针 | 1 | MTQ-700B2000 | Needle TQ×7 #20 |
| 4 | 101S11006 | 支针螺钉 | 1 | SS-7080510-TP | Screw 1/8-44 L=4.5 |
| 5 | 40902014 | 针棒 | 1 | B1401-372-000-A | Needle bar |
| 6 | 40903026 | 针棒下轴套 | 1 | B1403-372-000-A | Needle bar bushing lower |
| 7 | 40913013 | 导线钩 | 1 | B3112-372-000 | Needle bar balance |
| 8 | 40909016 | 针棒连接杆 | 1 | B3113-372-000 | Needle bar clamp |
| 9 | 101S11006 | 螺钉 | 1 | SS-6091210-TP | Screw 9/64-40 L=12 |
| 10 | 40903027 | 针棒上轴衬 | 1 | B1402-372-000 | Needle bar bushing , upper |
| 11 | 40909017 | 针棒轴衬座 | 1 | B1406-372-000 | Needle bar bushing, block |
| 14 | 40905007 | 针杆连杆 | 1 | B1409-372-000-B | Needle bar rocking pipe |
| 15 | L02008 | 螺栓M6×14 | 2 | GB/T5781-1986 | Screw M6 L=14 |
| 16 | 409S20025 | 合叶螺丝 | 1 | SD-0950806-SH | Hinge screw D=9.53 H=8 |
| 17 | 40928013 | 垫圈 | 1 | B1425-372-000 | Waher 5×10.5×1 |
| 18 | ×××× | 曲柄连杆组件 | 1 | B1424-372-000 | Crank rod asm. |
| 19 | 409S11009 | 螺钉 | 2 | SS-2110920-TP | Screw 11/64-40 L=8.5 |
| 20 | 40912046 | 盖板 | 1 | B1423-372-000 | Holder |
| 21 | 40905009 | 连杆 | 1 | B1424-372-000 | Rod |
| 22 | 40910009 | 偏心凸轮 | 1 | B1422-372-000 | Eccentric cam |
| 23 | 409S14001 | 螺钉 | 1 | SS-8660612-TP | Screw 1/4-40 L=6 |
| 24 | 409S14001 | 螺钉 | 1 | SS-8660612-TP | Screw 1/4-40 L=8.5 |
| 25 | 40923008 | 油线 | 1 | B1419-372-000 | Oil wick |
| 26 | 41017001 | 机针 | 1 | MTQ-100B1600 | Needle TQ×1 #16 |

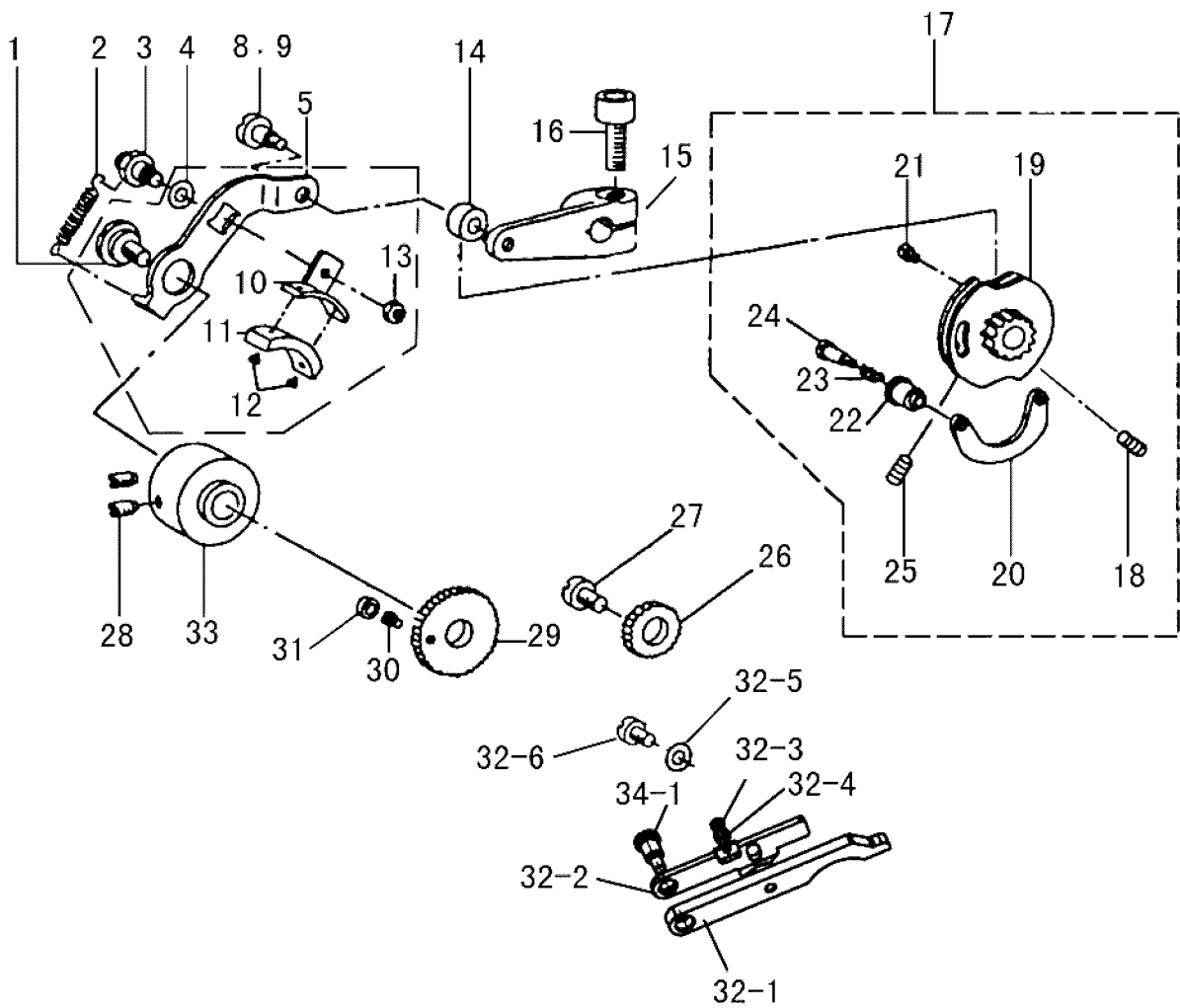
九、止动机构部件/Stop motion mechanism components



第九部件 止动机构部件

| 序号 | 零件件号 | 名称 | 数量 | 同类编号 | Description |
|----|------------|-----------|----|-----------------|---------------------------------|
| 1 | 409S30014 | 止动柱螺杆 | 1 | B2605-372-000 | Stop motion plunger rod |
| 2 | 409S16020 | 螺母 | 1 | NS-6150310-SP | Nut 15/64-28 |
| 3 | 40909018 | 止动柱 | 1 | B2604-372-000 | Stop motion plunger |
| 4 | 409S11025 | 螺钉 | 1 | SS-6151040-SP | Screw 15/64-28 L=10 |
| 5 | 400114 | 止动柱塞杆座 | 1 | B2602-372-000-A | Stop motion plunger lever |
| 6 | 40928003 | 弹簧 | 1 | B2606-372-000 | Stop motion disc spring |
| 7 | 40922004 | 橡胶垫圈 | 4 | B2608-280-000 | Rubber cushion |
| 8 | 40928014 | 垫圈 | 1 | B8220-804-000 | Washer 5×10.5×1 |
| 9 | 409S16021 | 调节螺母 | 2 | NS-6680410-SP | Nut 9/32-28 |
| 10 | 40902015 | 止动杆轴 | 1 | B2601-373-N00-A | Stop motion shaft |
| 12 | 409S12004 | 螺钉 | 1 | B2603-372-000 | Screw |
| 13 | 409S15009 | 螺钉 | 1 | SS-8151570-SP | Screw 15/64-28 L=15 |
| 14 | 402S16003 | 螺母 | 1 | NS-6150310-SP | Nut 15/64-28 |
| 15 | ×××× | 合叶螺丝 | 1 | SD-0680271-SP | Hinge screw D=6.8 H=2.7 |
| 16 | ×××× | 螺母 | 1 | NS-6150310-SP | Nut 15/64-28 |
| 17 | ×××× | 停止螺钉 | 1 | B2615-372-000 | Stop screw |
| 18 | ×××× | 螺母 | 1 | NS-61500310-SP | Nut 15/64-28 |
| 19 | L02009 | 螺栓M6×10 | 1 | SM-9061003-CP | Screw M6 L=10 |
| 20 | 4091204700 | 止动分离杆组件 | 1 | B2614-372-000 | Stop motion trip lever |
| 21 | ×××× | 止动分离杆座 | 1 | B2612-372-000 | Stop motion trip lever bracker |
| 22 | 409S12005 | 螺钉 | 2 | SS-9150860-SP | Screw 15/64-28 L=8 |
| 23 | 40927015 | 止动分离杆弹簧 | 1 | B2616-372-000 | Spring |
| 24 | ×××× | S形链钩 | 1 | B8133-019-000 | S shaped hook |
| 25 | 40926011 | 止动杆恢复弹簧销 | 1 | B2608-372-000 | Stop motion lever spring pin |
| 26 | 40927016 | 止动杆恢复弹簧 | 1 | B2609-372-000 | Stop motion lever spring |
| 27 | 409S30015 | 螺丝栓 | 1 | B2610-372-000 | Screw stud |
| 28 | 40912049 | 止动圆盘适用压力杆 | 1 | B2611-372-000 | Stop motion disc pressure lever |

十、选线部件/Stitch selecting parts components



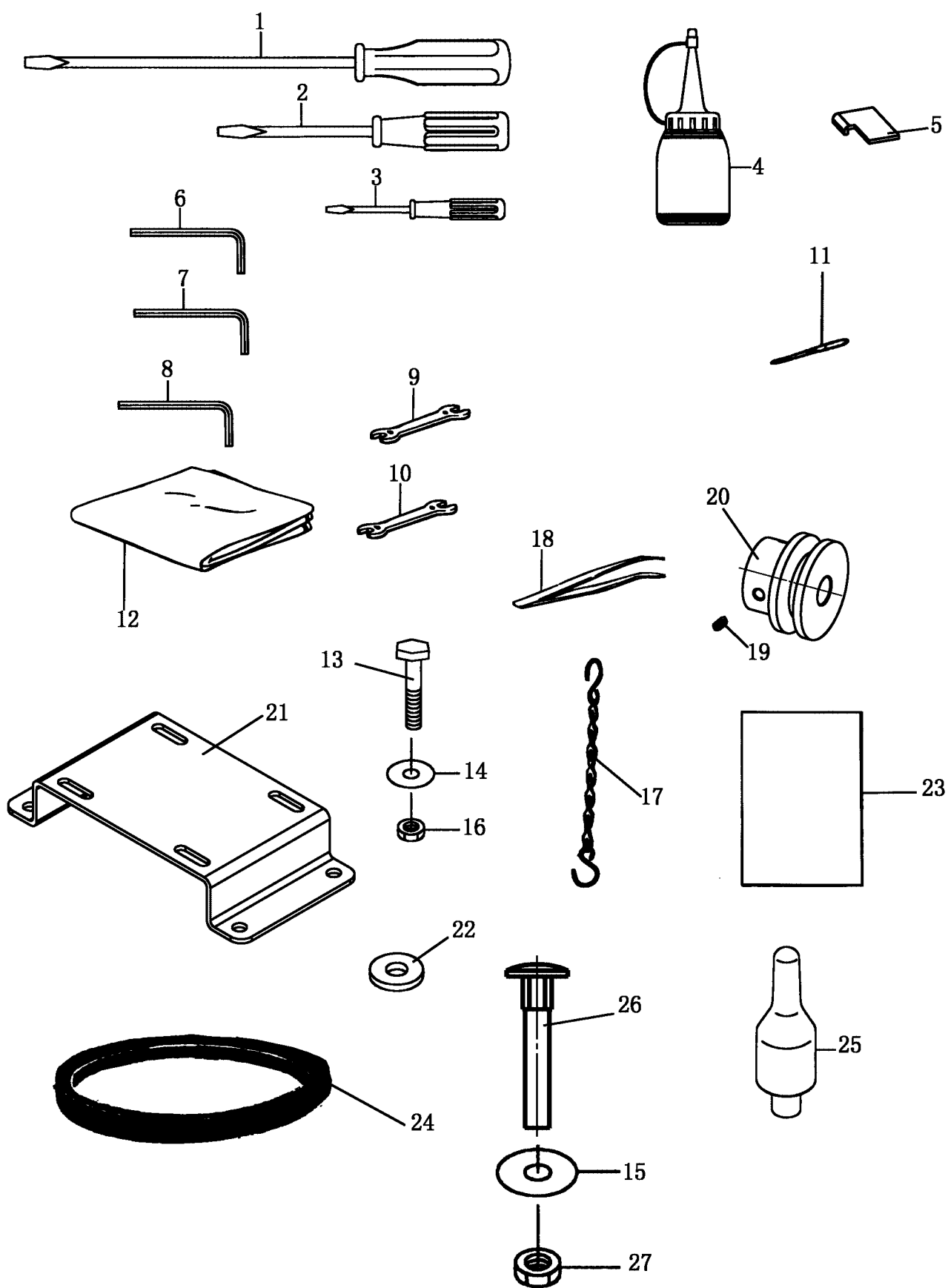
第十部件 选线部件

| 序号 | 零件件号 | 名称 | 数量 | 同类编号 | Description |
|------|------------|-----------|----|-----------------|---------------------------------|
| 1 | 409S20028 | 螺钉 | 1 | SD-1127321-SP | Hinge screw D=12.7 H=13.2 |
| 2 | 40927017 | 摩擦片弹簧 | 1 | B2643-372-000 | Spring for friction plate |
| 3 | 40902016 | 摩擦片转动轴 | 1 | B2638-372-000-A | Friction plate rotating shaft |
| 4 | 40928015 | 垫圈 | 1 | WP-0850002-SP | Washer 8.5×18×1.6 |
| 5 | 4091205500 | 摩擦片组件 | 1 | ---- | Speed slowing lever |
| 7 | 409S20029 | 螺钉 | 1 | SD-0719331-SP | Hinge screw D=7.94 H=13.3 |
| 8 | ×××× | 螺钉 | 1 | SD-0719331-SP | Hinge screw D=7.94 H=13.3 |
| 10 | 40912051 | 摩擦片座 | 1 | B2639-372-000 | Friction plate holder |
| 11 | 40912052 | 减速摩擦片 | 1 | B2640-372-000 | Speed slowing friction plate |
| 12 | R01001 | 铆钉2×6 | 2 | B3211-232-000 | Positioning pin |
| 13 | 409S16023 | 螺母 | 1 | NS-6110310-SP | Nut 11/64-40 |
| 14 | 40903028 | 止动分离杆凸缘滚柱 | 1 | B2619-372-000 | Stop motion tripping lever cam |
| 15 | 40904002 | 止动分离杆 | 1 | B2618-372-0A0-B | Stop motion tripping lever asm. |
| 16 | S05024 | 螺钉M8×30 | 1 | SM-6082502-TP | Screw M8 L=25 |
| 17 | 40910010 | 止动凸轮组件 | 1 | B2621-372-0B0 | Stop motion cam asm. |
| 18 | 401S14001 | 螺钉 | 2 | ---- | Screw 15/64-28 L=9 |
| 19 | ×××× | 止动凸轮 | 1 | ---- | Stop motion cam shoe |
| 20 | ×××× | 止动凸轮底板 | 1 | ---- | Stop motion cam shoe |
| 21 | ×××× | 止动凸轮固定螺钉 | 1 | ---- | Screw for stop motion cam shoe |
| 22 | ×××× | 止动凸轮旋钮 | 1 | ---- | Stop motion cam knob |
| 23 | ×××× | 弹簧 | 1 | ---- | Spring |
| 24 | ×××× | 螺钉 | 1 | ---- | Hinge screw D=4.8 H=14.5 |
| 25 | 401S14001 | 螺钉 | 2 | SS-8150912-TH | Hinge screw D=7.94 H=4.3 |
| 26 | 40925007 | 选线正齿轮(中间) | 1 | B2629-372-000 | Stitch selecting spur gear, MI |
| 27 | 409S11026 | 齿轮轴 | 1 | B2628-372-000-A | Intermediate gear shaft |
| 28 | 401S14001 | 螺钉 | 2 | SS-8151150-TP | Screw 15/64-28 L=10.5 |
| 29 | 40925008 | 选线正齿轮 | 1 | B2630-372-000-A | Gear, large |
| 30 | 409S11027 | 螺钉 | 1 | B2631-372-000 | Screw |
| 31 | 40903030 | 滚圈 | 1 | B2632-372-000-A | Roll |
| 32-1 | 40912056 | 选线杆 | 1 | ---- | Speed slowing friction wheel |
| 32-2 | 40912057 | 调整板 | 1 | ---- | Adjust plate |
| 32-3 | 402S11009 | 调整螺钉 | 1 | ---- | Adjust plate screw |
| 32-4 | 409S16041 | 调整螺母 | 1 | ---- | Adjust plate nut |
| 32-5 | 40228008 | 垫圈 | 1 | ---- | washer |
| 32-6 | 402S11003 | 螺钉 | 1 | ---- | Screw |
| 33 | 40910012 | 减速摩擦轮 | 1 | B2635-372-000-A | Spring for friction wheel |
| 34-1 | 409S20032 | 螺钉 | 1 | ---- | Screw |

第十一部分 线架部件

| 序号 | 零件件号 | 名称 | 数量 | 同类编号 | Description |
|----|------------|---------------|----|------|---------------------------------|
| 1 | 10131002 | 螺丝刀 (大) | 1 | ---- | Screw driver, large |
| 2 | 10131003 | 螺丝刀 (中) | 1 | ---- | Screw driver, middle |
| 3 | 10131004 | 螺丝刀 (小) | 1 | ---- | Screw driver, small |
| 4 | 30131010 | 内六角扳手 (3mm) | 1 | ---- | Inner wernch, 3mm |
| 5 | 30131012 | 内六角扳手 (4mm) | 1 | ---- | Inner wernch, 4mm |
| 6 | 20131047 | 内六角扳手 (5mm) | 1 | ---- | Inner wernch, 5mm |
| 7 | 20131075 | 干燥剂 | 4 | ---- | Desiccant |
| 8 | 30131006 | 扳手 (8mm~10mm) | 1 | ---- | Spanner |
| 9 | 40931025 | 扳手 (9mm-11mm) | 1 | ---- | Spanner |
| 10 | 40931028 | 使用说明书、零件目录 | 1 | ---- | Instruction manual & parts list |
| 11 | 40931019 | 定位尺 | 1 | ---- | Gauge |
| 12 | 40931031 | 单盘线架 | 1 | ---- | Thread stand asm |
| 13 | 41017001 | 机针 | 4 | ---- | Needle |
| 14 | 20131054 | 脚踏板链 | 1 | ---- | Chain |
| 15 | 40931007 | 电机座 | 1 | ---- | Motor pullfy asm |
| 16 | 40931008 | 电机座垫 | 4 | ---- | Spacer |
| 17 | 40912024 | 针杆护罩 | 1 | ---- | Needle bar guard |
| 18 | 40931004 | 0-710型皮带 | 1 | ---- | 710 V-Belt |
| 19 | 4091100100 | 钮扣盘组件 | 1 | ---- | Button tray |
| 20 | 20131037 | 油壶 | 1 | ---- | Oil can |
| 21 | 20131038 | 小油壶 (尖嘴) | 1 | ---- | Oil can |
| 22 | 20131051 | 镊子 | 1 | ---- | Tweezers |
| 23 | 40931032 | 泡沫箱 | 1 | ---- | Foam box |
| 24 | 40931034 | 型号牌 | 1 | ---- | Models of brand |
| 25 | 20131063 | 警告牌 | 1 | ---- | Warning sign |
| 26 | 40931036 | 纸箱 | 1 | ---- | hard paper case |
| 27 | 20131062 | 机头塑料袋 | 1 | ---- | plastic bag |
| 28 | 20131077 | 20×15袋 | 1 | ---- | plastic bag |
| 29 | 20131078 | 32.5×7袋 | 1 | ---- | plastic bag |
| 30 | 20131079 | 8.5×12袋 | 1 | ---- | plastic bag |
| 31 | 40931003 | 电机皮带轮组件 | 1 | ---- | Motion pulley |
| 32 | 40931010 | 木螺钉4-2 | 3 | ---- | wood screw |
| 33 | 40931009 | 373 6*70螺钉 | 4 | ---- | Screw |
| 34 | 40931010 | 373 6*35螺钉 | 4 | ---- | Screw |
| 35 | 40931011 | 马车螺钉 | 4 | ---- | Motion screw |

11. 附件组件 ACCESSORY PARTS COMPONENTS



第十一部分 附件组件

| 序号 | 零件件号 | 名称 | 数量 | 同类编号 | DESCRIPTION |
|----|-----------|---------------|----|-------|---------------------------------|
| 1 | 10131002 | 螺丝刀 (大) | 1 | ----- | SCREW DRIVER LARGE |
| 2 | 10131003 | 螺丝刀 (中) | 1 | ----- | SCREW DRIVER MIDDLE |
| 3 | 10131004 | 螺丝刀 (小) | 1 | ----- | SCREW DRIVER SMALL |
| 4 | 20131038 | 小油壶 (尖嘴) | 1 | ----- | OILER |
| 5 | 40931019 | 定位尺 | 1 | ----- | GAUGE |
| 6 | 30131010 | 内六角扳手 (3mm) | 1 | ----- | INNER WERNCH 3mm |
| 7 | 30131012 | 内六角扳手 (4mm) | 1 | ----- | INNER WERNCH 4mm |
| 8 | 20131047 | 内六角扳手 (5mm) | 1 | ----- | INNER WERNCH 5mm |
| 9 | 30131006 | 扳手 (8mm~10mm) | 1 | ----- | Wrench 8mm~10mm |
| 10 | 40931025 | 扳手 (9mm~11mm) | 1 | ----- | Wrench 9mm~11mm |
| 11 | 41017004 | TQ*7 16#机针 | 3 | ----- | NEEDLE TQ×7#16-12 |
| 12 | 10131005 | 机头罩 | 1 | ----- | MACHINE COVER |
| 13 | 40931009 | M6×70螺钉 | 4 | ----- | SCREW M6 L=70 |
| 14 | 40128013 | 垫圈6.2×13×1 | 4 | ----- | WASHER 6.2×13×1 |
| 15 | W01018 | 垫圈10 | 4 | ----- | WASHER |
| 16 | N01007 | 螺母M6 | 4 | ----- | NUT M6 |
| 17 | 20131054 | 脚踏板链 | 1 | ----- | CHAIN |
| 18 | 20131051 | 镊子 | 1 | ----- | TWEEZERS |
| 19 | S10010 | 螺钉M5X10 | 1 | ----- | SCREW M5 L=10 |
| 20 | 40931003 | 电机飞轮 | 1 | ----- | MOTOR PULLEY (FOR 50HZ) |
| 21 | 40931007 | 电机座 | 2 | ----- | MOTOR BASE |
| 22 | 40931008 | 电机座垫 | 4 | ----- | MOTOR BASE CUSHION |
| 23 | 40931028 | 说明书 | 1 | ----- | INSTRUCTION MANUAL & PARTS LIST |
| 24 | 40931004 | 710型皮带 | 1 | ----- | BELT |
| 25 | 40311002 | 支撑棒 | 1 | ----- | SUPPORT |
| 26 | 40931011 | 马达螺钉 | 3 | ----- | MOTOR SCREW |
| 27 | 401S16018 | 马达固定螺母M8 | 3 | ----- | NUT M8 |